

Use VE7CC DX-Cluster (CC Cluster) together with HAM-LOG.

You can find the software from VE7CC at URL www.ve7cc.net .

In addition you need the software HW VSP 3 – Virtual Serial Port:

(http://www.hw-group.com/products/hw_vsp/index_en.html)

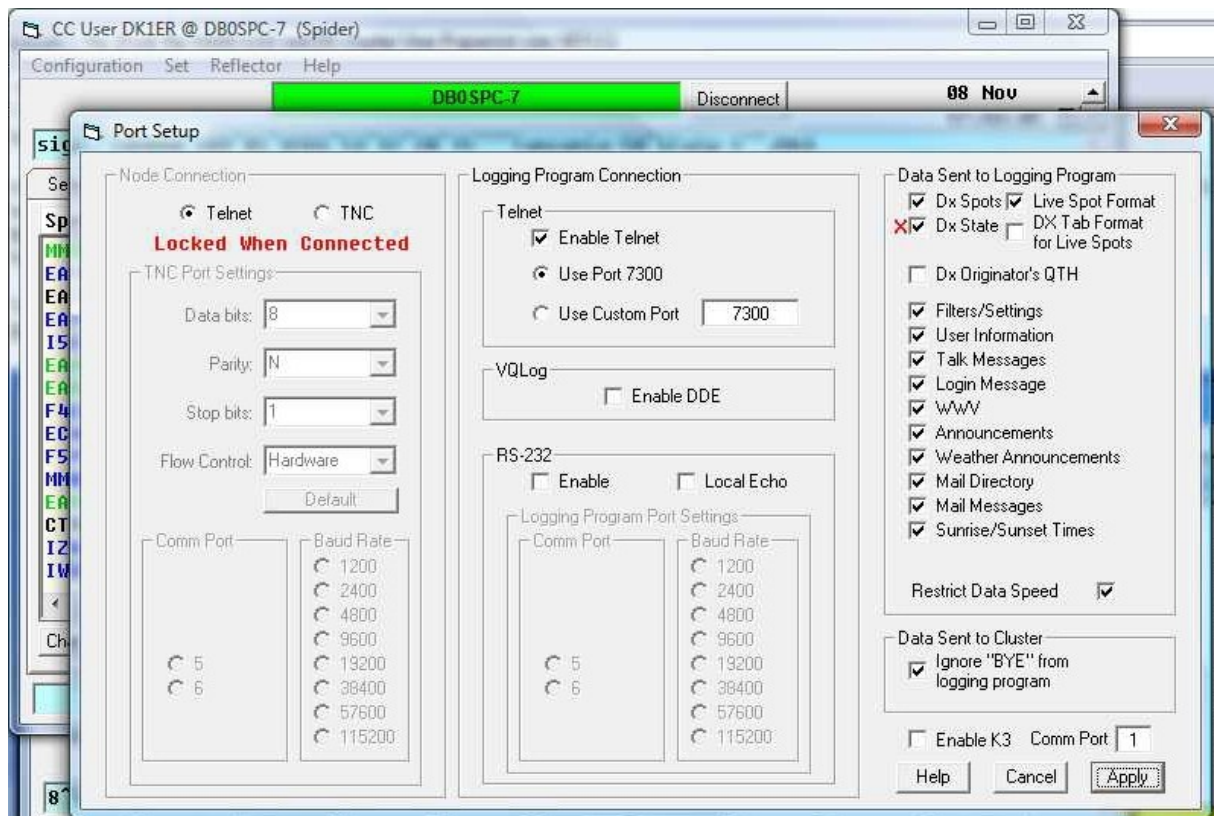
Function: You will link a serial port (e.g. COM 3) to an IP-address with Port. Within ARUser the Telnet port 7300 will be switched on over 127.0.0.1.

Within HAM-LOG you use e.g. COM 3 for the Packet Radio configuration.

Both programs ARUser and HW VSP3 are freeware.

This idea came from Andreas, DK1ER, many thanks.

Here you will find 3 screen shots to explain the configuration.



HAM-LOG for Windows 3.39

Packet Radio Configuration

Packet Program: HAM-LOG, EasyPacket, OTHER, DXTelnet, TCP/IP

Serial Protocol: Port name: COM3, Baud rate: 19200, Parity: None, Data bits: 8, Stop bits: 1

DDE Definitions: Server, Topic, Item, Path/Program

Packet Radio Mode

Band Filter: ALL, 2190m, 160m, 80m, 40m, 30m, 20m, 17m, 15m, 12m, 6m, 2m, 1.25m

Message Filter: DX de, WX de, WWV de, DX Spot Filter, New DXCC, Worked DXCC, Confirmed DXCC

Maximum RX Lines: 99, Maximum DX Lines: 19, PR command char: 27, Init. Filename, Trace Filename, New DXCC Sound: System Normal

RTTY Mode: Sende Text nach Leertaste

Buttons: TCP/IP Config, Speichern

Packet Radio Monitor (Packet Mode)

DX de F4ENK: 14093.0 XROY

YWSF 3 up, no takers SA-05
OX3KQ Kangerlussuaq
GM3ITN wrking usa
OTG ss MN MN
M6XRO/P wkd up 1,7
XROY tnx...UP 1-3
H1HS very nice sign.
S6BQI BPSK31 TNX
BFHF Sonny OH
P2MNK up

ORG	Time	DXCC	Zn	ITU
14.1697	1745Z	W	04	08
14.0700	1744Z	ZS	38	57
14.0880	1743Z	5H	37	53
14.0920	1742Z	CE0EI	12	
21.0478	1743Z	W	04	07
14.1988	1741Z	GM	14	27
14.2580	1740Z	OX	40	05

Call: DK1ER F:\HAMLOG32\DK1ER QSOs: 220 STANDARD 18:47:08

HAM-LOG for Windows 3.39

Packet Radio Monitor (Packet Mode)

DX de IK2HKT: 18138.0 VP2MNK LSN 18138
DX de MM0BSM: 21034.0 K4GM 559 VA
DX de EA1MX: 14054.8 K7RL ss WA
DX de EA7TG: 18078.1 YW5F SA-058
DX de EA1WX: 14048.2 R6VT ss CA
DX de ISCTY: 14280.0 VR6DS week
14280.5 N2IC ss NM
14215.0 LU5EK op oswaldo mar de pla
1093.0 XROY
1280.0 YW5F
1258.0 OX3KQ

CC User DK1ER @ DB0SPC-7 (Spider)

Configuration Set Reflector Help

DB0SPC-7 Disconnect 08 Nov 17:48:49

8°5'48"27"14" Greenland-OX France-F^JH36

Spotter	Freq	DX	deg	kn	Time	Comments
EA7AAA	7066.0	EA7DJQ	228	1438	1733Z	Spain: no es citio
ON5FP	1823.2	HA1DRE	111	648	1735Z	Hungary:
HB0BQN	10106.0	9H6XRO/P	71	10865	1733Z	East Malaysia: UP
OH8FAL	14245.0	KE7DPE	329	8156	1732Z	United States: qc d
IK2HKT	18138.0	UP2MNK	267	7242	1735Z	Montserrat: LSN 181
HA8BSH	21838.0	K4GM	295	6587	1735Z	United States: 559
EA1MX	14054.8	K7RL	329	8156	1737Z	United States: ss
EA7TG	18078.1	YW5F	266	8111	1736Z	Venezuela: SA-058
EA1MX	14048.2	K6VT	323	9167	1737Z	United States: ss
ISCTY	14280.0	VR6DS	293	15562	1734Z	Pitcairn I.: week
EA1WX	21029.5	N2IC	311	9012	1738Z	United States: ss
EA5GOK	21215.0	LU5EK	231	11483	1737Z	Argentina: op oswal
FAENK	14093.0	XROY	272	14275	1738Z	Easter Island:
EC4DX	14280.0	YW5F	266	8111	1738Z	Venezuela: 3 up, no
F5PFP	14258.0	OX3KQ	314	3496	1740Z	Greenland: Kangerlu

Buttons: Chat, Log, Fix, Alarm, Clear ALL, Clear Sound, Ann, Spot, Get ALL

Call: DK1ER F:\HAMLOG32\DK1ER QSOs: 220

HW Virtual Serial Port - HW VSP3 (Admin a...)

UDP Search [Virtual Serial Port] Settings Advanced

General: Port Name: COM3, IP Address: 127.0.0.1, Port: 7300

VSP: Status: Opened, Baud: 19200, Bits: 8, Parity: None, Stopbits: 1, Handflow: None

LAN: Status: Connected, Counters: VSP: Rx: 0, Tx: 12583, LAN: 0, QUEUE: 0

Buttons: Create COM, Delete COM, Login

HW group www.HW-group.com Version 3.0.37 IO + Serial over IP / Multiprot driver