

HAM-LOG zusammen mit dem VE7CC DX-Cluster (CC Cluster) betreiben.

Das Programm von VE7CC ist auf der URL www.ve7cc.net zu finden.

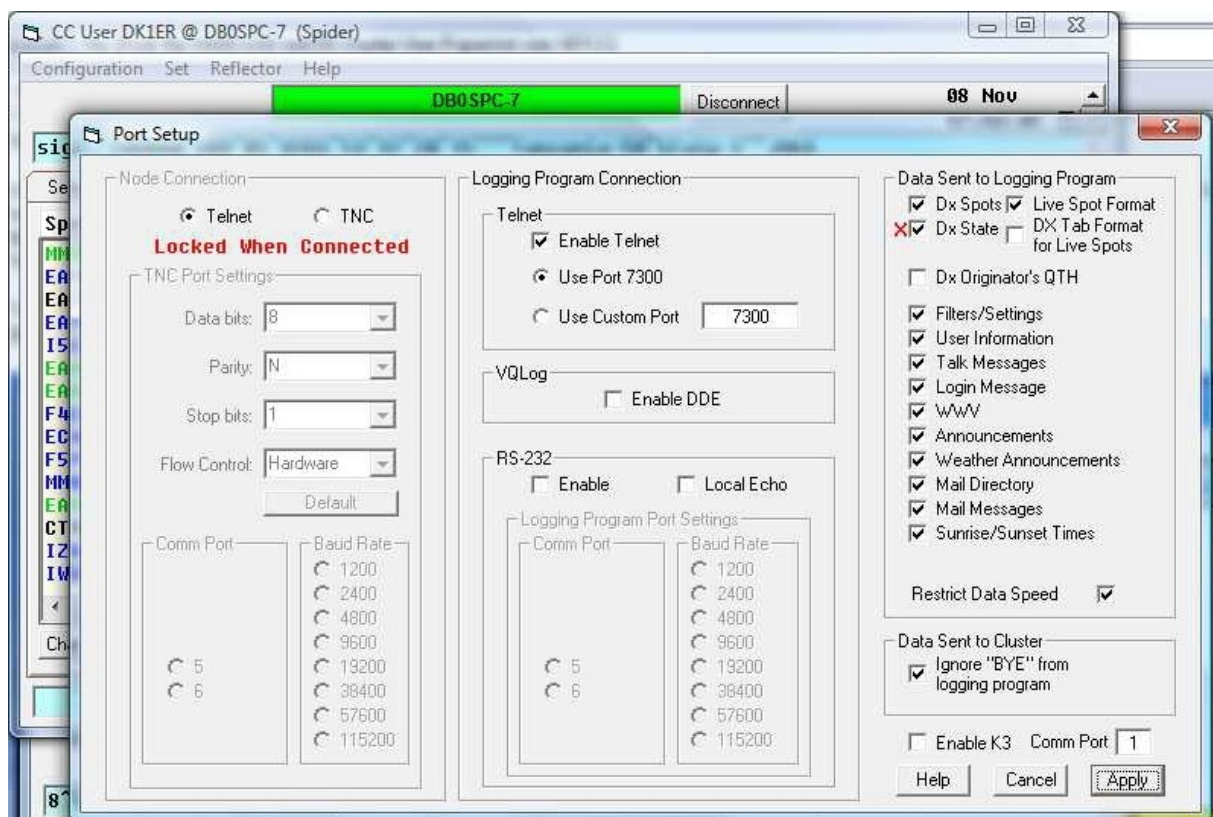
Weiterhin benötigt man das Freeware Programm HW VSP 3 – Virtual Serial Port:
(http://www.hw-group.com/products/hw_vsp/index_en.html)

Hierbei wird eine serielle Schnittstelle (z.B. Com3) auf eine IP-Adresse mit Port gelinkt. Im ARUser wird der Telnet-Port 7300 über 127.0.0.1 eingeschaltet. Im HAMLOG wird die Packet Radio Konfiguration HAMLOG mit COM3 verwendet.

Beide Programme ARUser und HW VSP3 sind Freeware.

Die Anregung habe ich von Andreas, DK1ER bekommen, vielen Dank.

Anbei noch 3 Screenshots zur Konfiguration.



HAM-LOG for Windows 3.39

Packet Radio Configuration

Packet Program: EasyPacket, OTHER, DXTelnet, TCP/IP

Serial Protocol: Port name: COM3, Baud rate: 19200, Parity: None, Data bits: 8, Stop bits: 1

DDE Definitions: Server, Topic, Item, Path/Program

Packet Radio Mode

Band Filter: ALL, 2190m, 160m, 80m, 40m, 30m, 20m, 17m, 15m, 12m, 6m, 2m, 1.25m

Message Filter: DX de, WX de, WWV de, DX Spot Filter: New DXCC, Worked DXCC, Confirmed DXCC

Maximum RX Lines: 99, Maximum DX Lines: 19, PR command char: 27, Init. Filename, Trace Filename, New DXCC Sound: System Normal

RTTY Mode: Sende Text nach Leertaste

Buttons: TCP/IP Config, Speichern

Packet Radio Monitor (Packet Mode)

DX de F4ENK: 14093.0 XROY

YWSF 3 up, no takers SA-05
OX3KQ Kangerlussuaq
GM3ITN wrking usa
OTG ss MN MN
M6XRO/P wkd up 1,7
XROY tnx...UP 1-3
H1HS very nice sign.
S6BQI BPSK31 TNX
BFHF Sonny OH
P2MNK up

ORG	Time	DXCC	Zn	ITU
14.1697	1745Z	W	04	08
14.0700	1744Z	ZS	38	57
14.0880	1743Z	5H	37	53
14.0920	1742Z	CE0EI	12	
21.0478	1743Z	W	04	07
14.1988	1741Z	GM	14	27
14.2580	1740Z	OX	40	05

Call: DK1ER F:\HAMLOG32\DK1ER QSOs: 220 STANDARD 18:47:08

HAM-LOG for Windows 3.39

Packet Radio Monitor (Packet Mode)

DX de IK2HKT: 18138.0 VP2MNK LSN 18138
DX de MM0BSM: 21034.0 K4GM 559 VA
DX de EA1MX: 14054.8 K7RL ss MA
DX de EA7TG: 18078.1 YW5F SA-058
DX de EA1WX: 14048.2 R6VT ss CA
DX de ISCTY: 14280.0 VR6DS week
14280.5 N2IC ss NM
14215.0 LU5EK op oswaldo mar de pla
1093.0 XROY
1280.0 YW5F 3 up, no takers SA-05
1258.0 OX3KQ Kangerlussuaq

CC User DK1ER @ DB0SPC-7 (Spider)

Configuration Set Reflector Help

DB0SPC-7 Disconnect 08 Nov 17:48:49

8°5'48"27"14" Greenland-OX France-F JN36

Spotter	Freq	DX	deg	kn	Time	Comments
EA7AAA	7066.0	EA7DJQ	228	1438	1733Z	Spain: no es citio
ON5FP	1823.2	HA1DRE	111	648	1735Z	Hungary:
HB0BQN	10106.0	9H6XRO/P	71	10865	1733Z	East Malaysia: UP
OH8FAL	14245.0	KE7DPE	329	8156	1732Z	United States: qc d
IK2HKT	18138.0	UP2MNK	267	7242	1735Z	Montserrat: LSN 181
HA8BSH	21838.0	K4GB	295	6587	1735Z	United States: 559
EA1MX	14054.8	K7RL	329	8156	1737Z	United States: ss
EA7TG	18078.1	YW5F	266	8111	1736Z	Venezuela: SA-058
EA1MX	14048.2	K6VT	323	9167	1737Z	United States: ss
ISCTY	14280.0	VR6DS	293	15562	1734Z	Pitcairn I.: week
EA1WX	21029.5	N2IC	311	9012	1738Z	United States: ss
EA5GOK	21215.0	LU5EK	231	11488	1737Z	Argentina: op oswal
FAENK	14093.0	XROY	272	14275	1738Z	Easter Island:
EC4DX	14280.0	YW5F	266	8111	1738Z	Venezuela: 3 up, no
F5PFP	14258.0	OX3KQ	314	3496	1740Z	Greenland: Kangerlu

Buttons: Chat, Log, Fix, Alarm, Clear ALL, Clear Sound, Ann, Spot, Get ALL

Call: DK1ER F:\HAMLOG32\DK1ER QSOs: 220

HW Virtual Serial Port - HW VSP3 (Admin a...)

UDP Search [Virtual Serial Port] Settings Advanced

General: Port Name: COM3, IP Address: 127.0.0.1, Port: 7300

VSP: Status: Opened, Baud: 19200, Bits: 8, Parity: None, Stopbits: 1, Handflow: None

LAN: Status: Connected, Counters: VSP: LAN: QUEUE: Rx: 0 2982 0, Tx: 12583 0 0

Buttons: Create COM, Delete COM, Login

HW group www.HW-group.com Version 3.0.37 I/O + Serial over IP / Multiprot driver